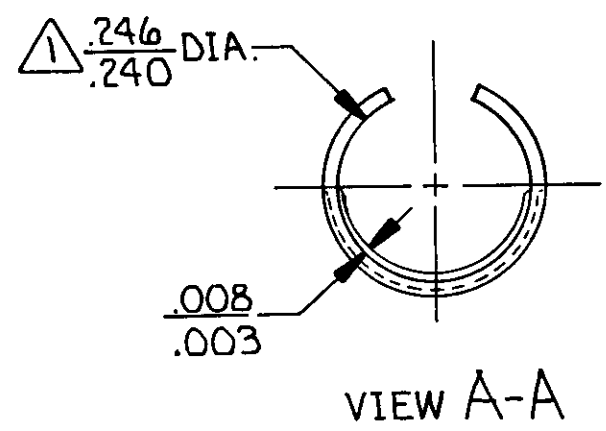
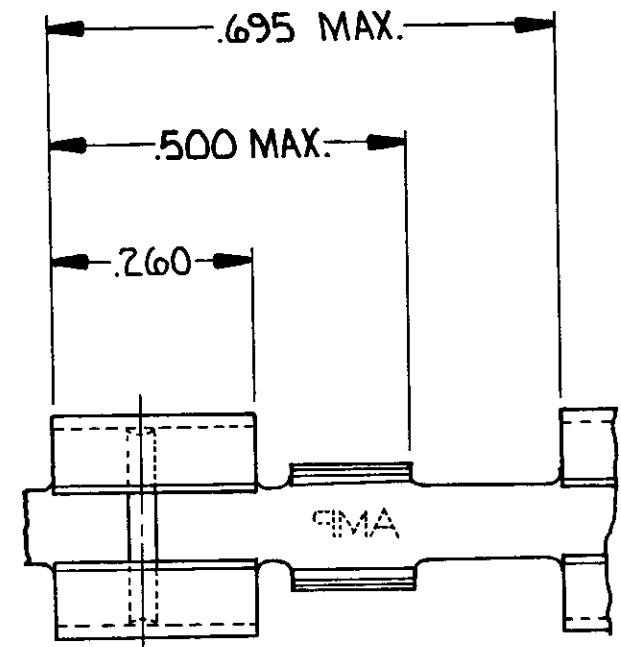


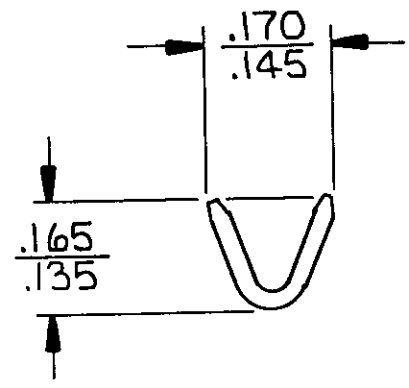
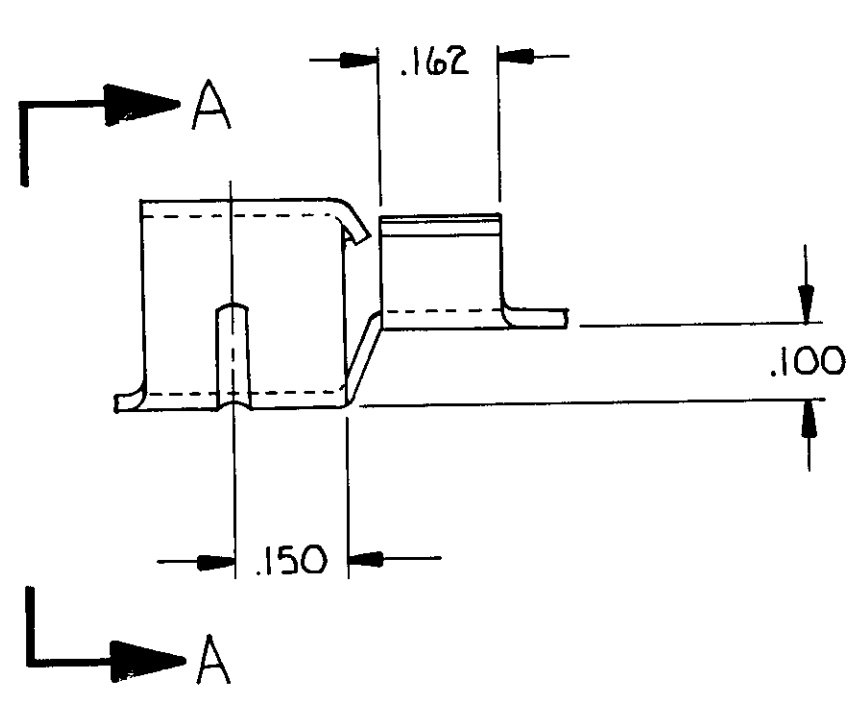
THIS DRAWING IS UNPUBLISHED. RELEASED FOR PUBLICATION, 19

© COPYRIGHT 19 BY AMP INCORPORATED, HARRISBURG, PA. ALL INTERNATIONAL RIGHTS RESERVED. AMP PRODUCTS MAY BE COVERED BY U.S. AND FOREIGN PATENTS AND/OR PATENTS PENDING.

REVISIONS						
P	F	ZONE	LTR	DESCRIPTION	DATE	APPROVED
✓			F3	REDWN, WAS LOCATED ON 40626	5-18-87	PKC
			G	REV PER 0710-0427-95	5/20/95	PMF



△ FITS ON .250 ± .003 DIA. PIN.



—	.020 BRASS	60654-2
PRE-TIN	.020 BRASS	60654 1
PLATING	MATERIAL	PART NO

UNLESS OTHERWISE SPECIFIED DIMENSIONS ARE IN INCHES. TOLERANCES ON: DECIMALS ± .015 ANGLES ± 1° 0'	CONTRACT NO		<b>AMP</b>   AMP INCORPORATED Harrisburg, Pa.	
	DR <i>Phil Collins</i> 5-18-87			
	MATERIAL	CHK <i>Beck</i> 5-28-87	NAME	
	SEE TABLE	APPD <i>Don Crown</i> 28 May 87	FUSE RECEPTACLE	
FINISH	DSGN APPD	SIZE <b>B</b>	FSCM NO <b>00779</b>	DRAWING NO <b>60654</b>
SEE TABLE	OTHER APPD	SCALE 4:1	SHEET 1 OF 1	

CUSTOMER DRAWING